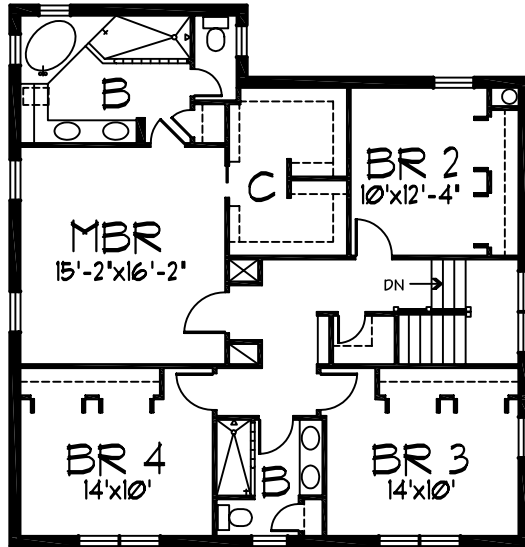




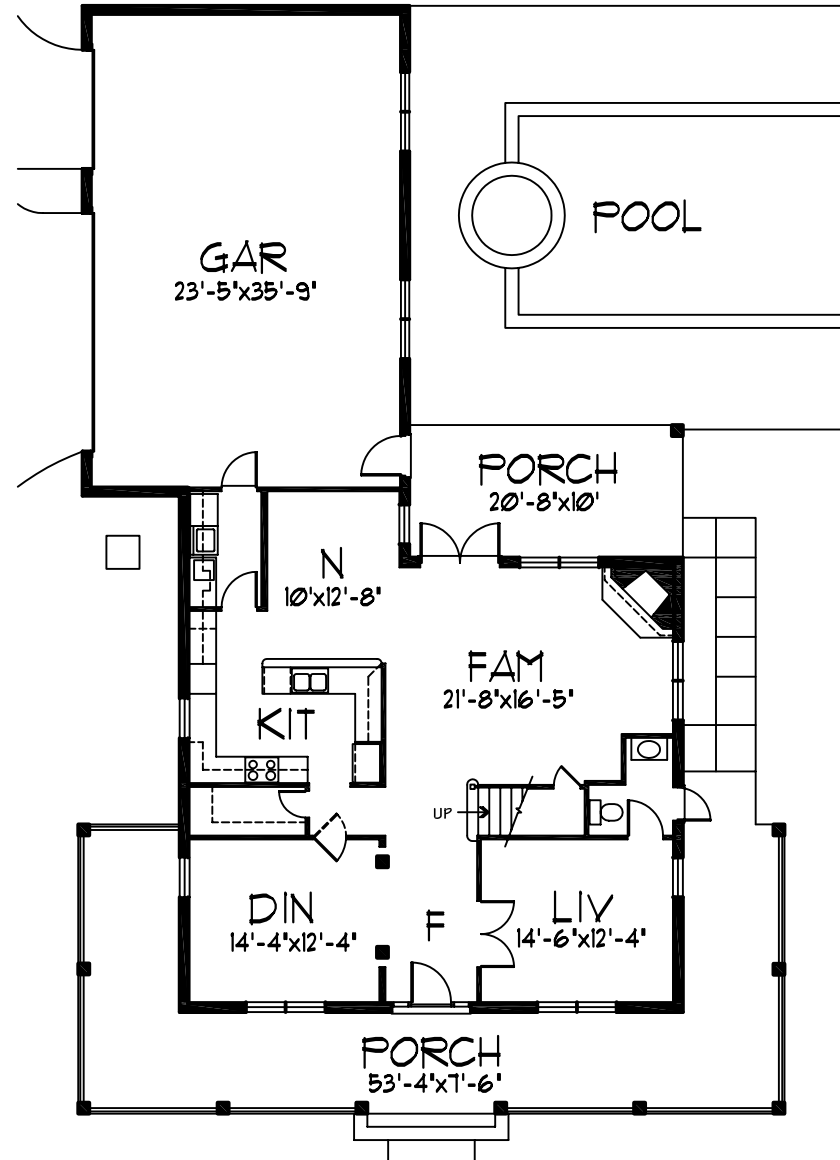
FRONT ELEVATION

FEATURES

- 4 BEDROOMS WITH 2.5 BATHROOMS
- 3 CAR GARAGE
- WRAP AROUND FRONT PORCH
- 10' CEILINGS IN FIRST FLOOR
- LARGE KITCHEN WITH WALK IN PANTRY
- POWDER ROOM w/ EXTERIOR ENTRY



SECOND FLOOR PLAN



FIRST FLOOR PLAN

TOTAL LIVING: 2718 S.F.

© 1998 A BETTER PLAN, INC.

A BETTER PLAN, INC.
 2090 W. EAU GALIE BLVD., SUITE. B
 MELBOURNE, FL. 32935

2718-I
YALE