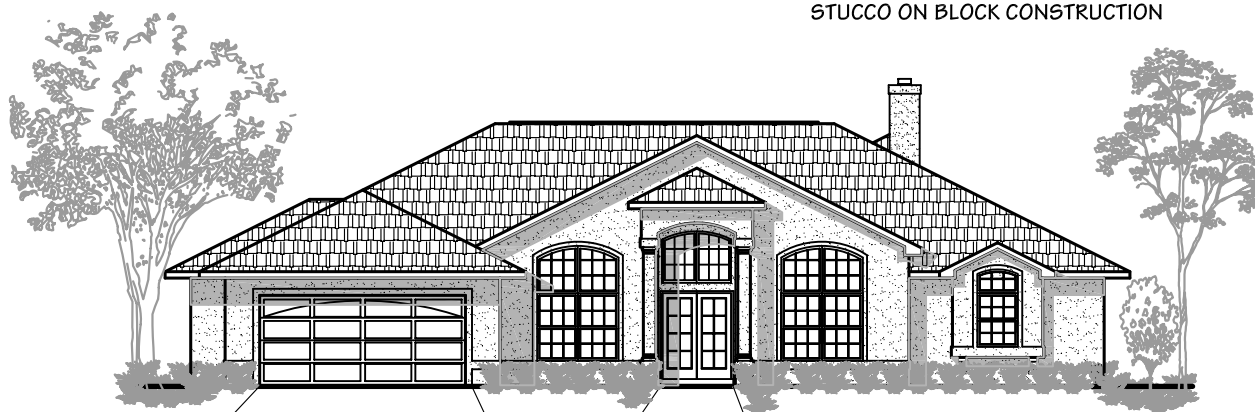


**FLOOR PLAN**  
TOTAL LIVING: 2618 S.F.

**FEATURES**

- 4 BEDROOMS WITH 3 BATHROOMS
- 2 1/2 CAR GARAGE
- SEPARATE LIVING AND FAMILY ROOM
- LARGE KITCHEN WITH WALK-IN PANTRY
- LARGE MASTER SUITE WITH ADJACENT DEN
- LARGE REAR PORCH OVERLOOKING POOL
- STUCCO ON BLOCK CONSTRUCTION



**FRONT ELEVATION**

© 2000 A BETTER PLAN, INC.

**A BETTER PLAN, INC.**  
2090 W. EAU GALIE BLVD., SUITE. B  
MELBOURNE, FL. 32935

**2618-1**  
**WALES**