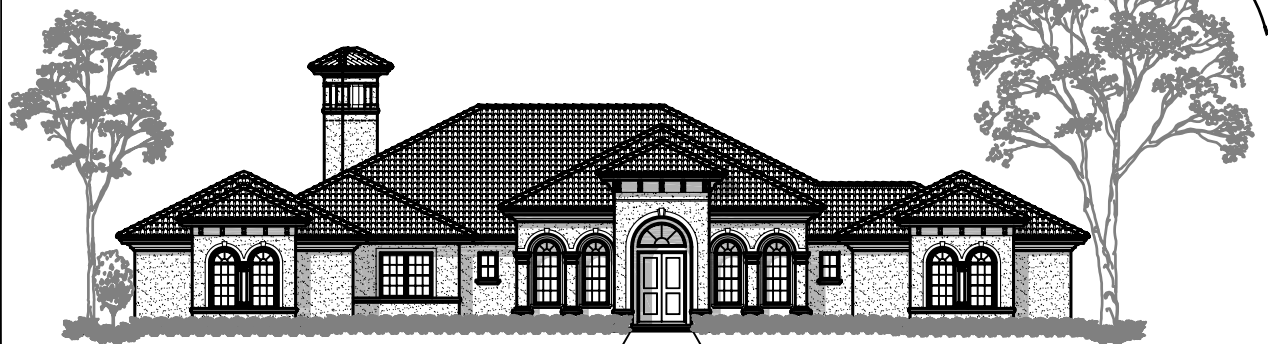


**FLOOR PLAN**  
TOTAL LIVING: 3821 S.F.

**FEATURES**

3 BEDROOMS, DEN, LIVING, DINING & LEISURE ROOMS, 3.5 BATHS, REAR LANAI WITH SUMMER KITCHEN, 2 CAR GARAGE & 1 CAR GARAGE



**FRONT ELEVATION**

**A BETTER PLAN, INC.**  
2090 W. EAU GALIE BLVD., SUITE. B  
MELBOURNE, FL. 32935

**3821-I**  
**NAPLES**