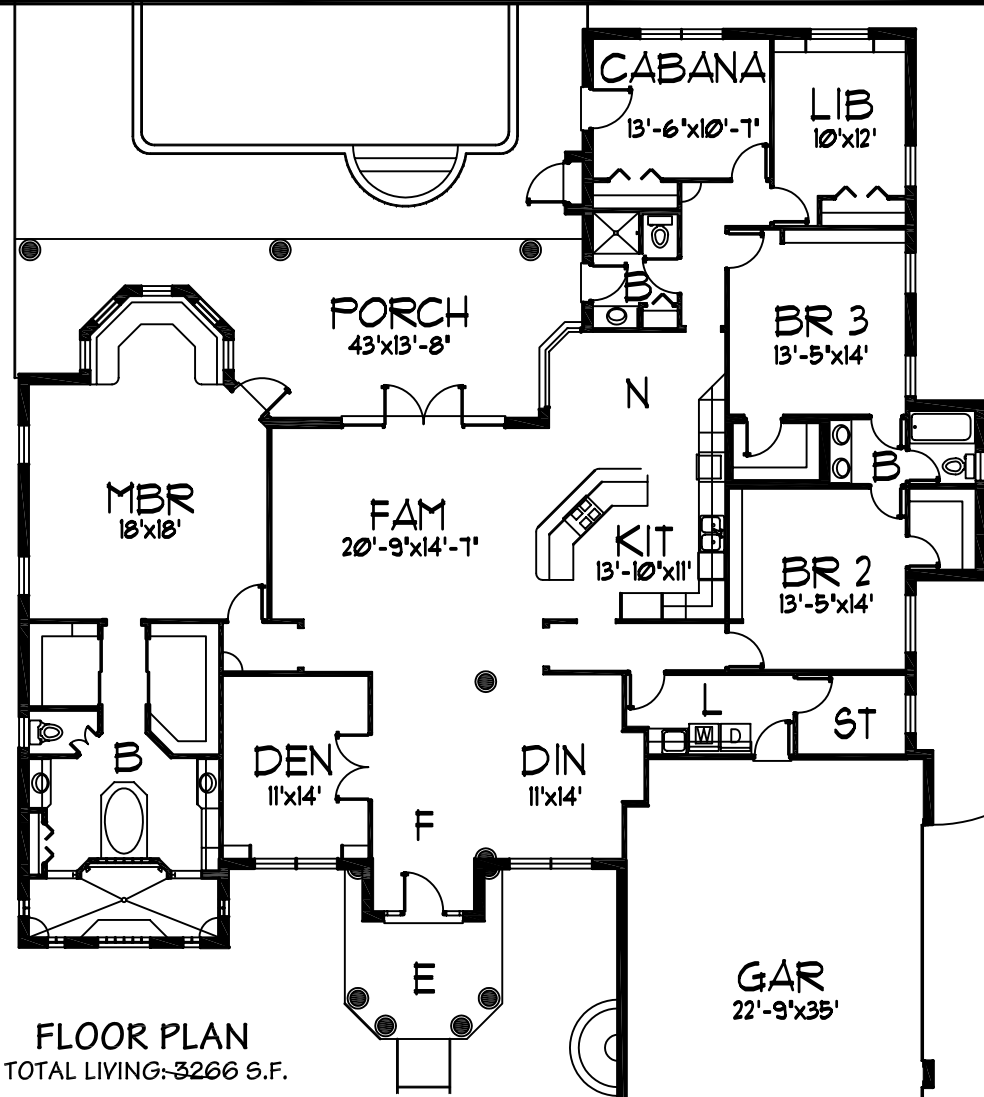


FEATURES

- 3 BEDROOMS WITH 3 BATHROOMS
- SIDE LOAD 3 CAR GARAGE
- DEN, LIBRARY, & CANANA ROOMS
- LARGE MASTER SUITE WITH LARGE WALK THRU SHOWER
- LARGE REAR PORCH OVERLOOKING POOL



FLOOR PLAN
TOTAL LIVING: 3266 S.F.



FRONT ELEVATION

© 2000 A BETTER PLAN, INC.

A BETTER PLAN, INC.
2090 W. EAU GALIE BLD., SUITE. B
MELBOURNE, FL. 32955

3266-1
EDMONTON