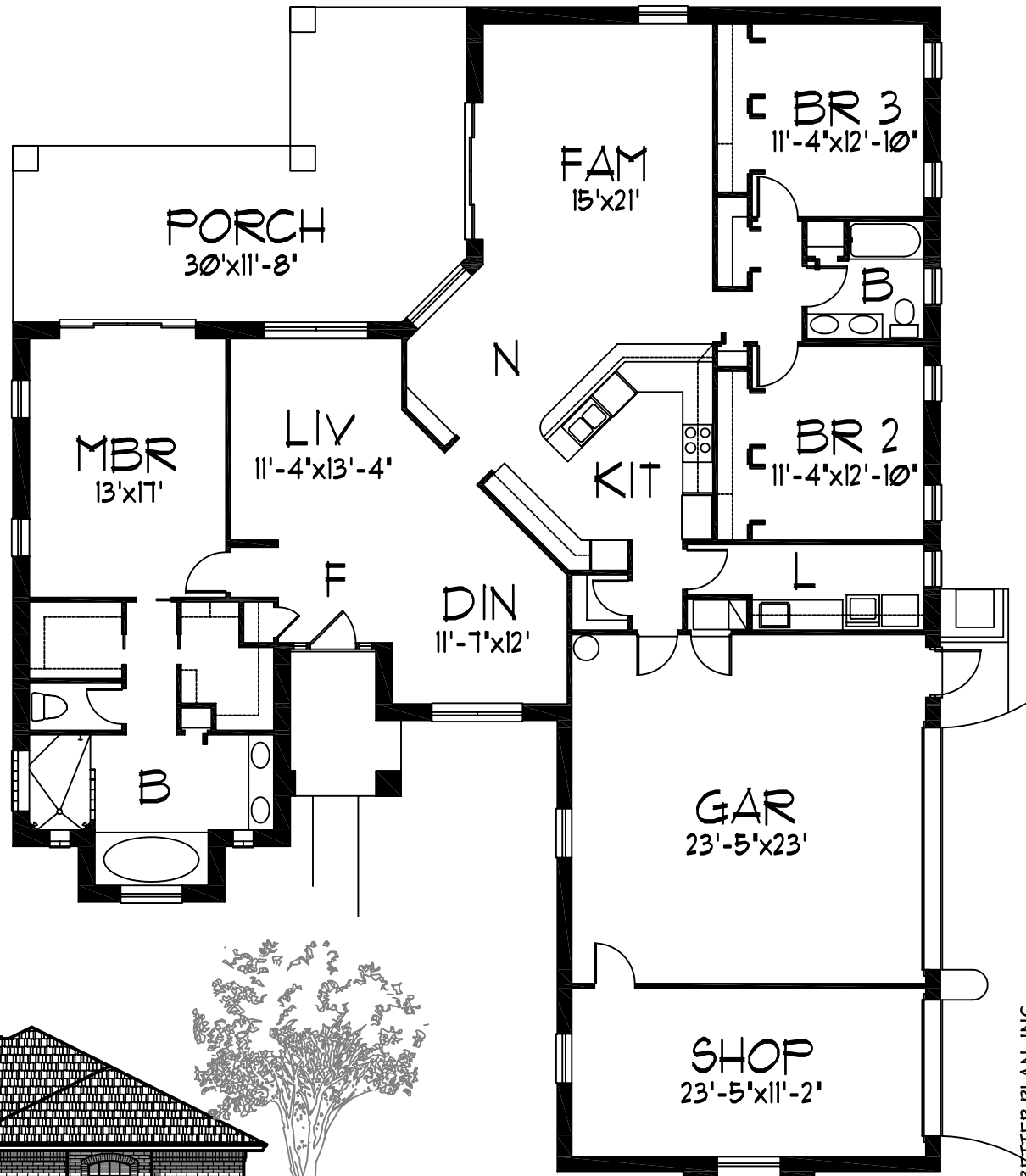


FEATURES

- 3 BEDROOMS WITH 2 BATHROOMS
- 2 CAR GARAGE PLUS SHOP
- CATHEDRAL CEILING IN FAMILY ROOM
- 10' CEILING IN OTHER ROOMS
- LARGE KITCHEN WITH WALK-IN PANTRY
- LARGE MASTER BATH
- HUGE BACK PROCH
- BRICK ON BLOCK CONSTRUCTION



FRONT ELEVATION

FLOOR PLAN
TOTAL LIVING: 2295 S.F.

© 2000 A BETTER PLAN, INC.

A BETTER PLAN, INC.
2090 W. EAU GALIE BLVD., SUITE B
MELBOURNE, FL. 32955

2295-1
DUKE