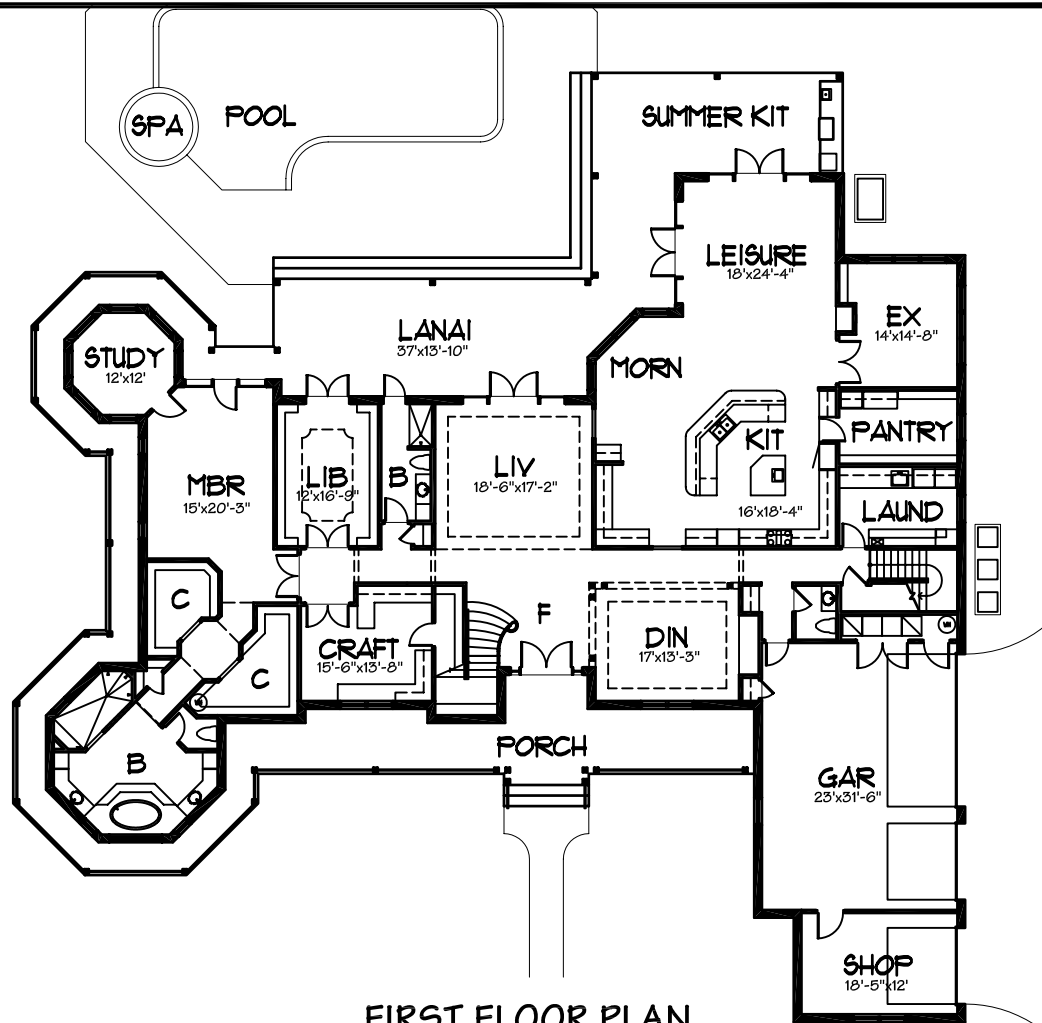


**SECOND FLOOR PLAN**

**FEATURES**

- 5 BEDROOMS & 5.5 BATHROOMS
- WRAP AROUND PORCHES
- EXERCISE ROOM
- BONUS ROOM ON 2nd FLOOR
- LARGE WALK-IN PANTRY
- HUGE MASTER SUITE
- LARGE LAUNDRY
- LIBRARY AND CRAFT ROOM
- LARGE BALCONY
- 3 CAR GARAGE AND SHOP



**FIRST FLOOR PLAN**

TOTAL LIVING: 6910 S.F.



**FRONT ELEVATION**

**A BETTER PLAN, INC.**  
2090 W. EAU GALIE BLVD., SUITE. B  
MELBOURNE, FL. 32935

**6910-I**  
**CHARLESTON**