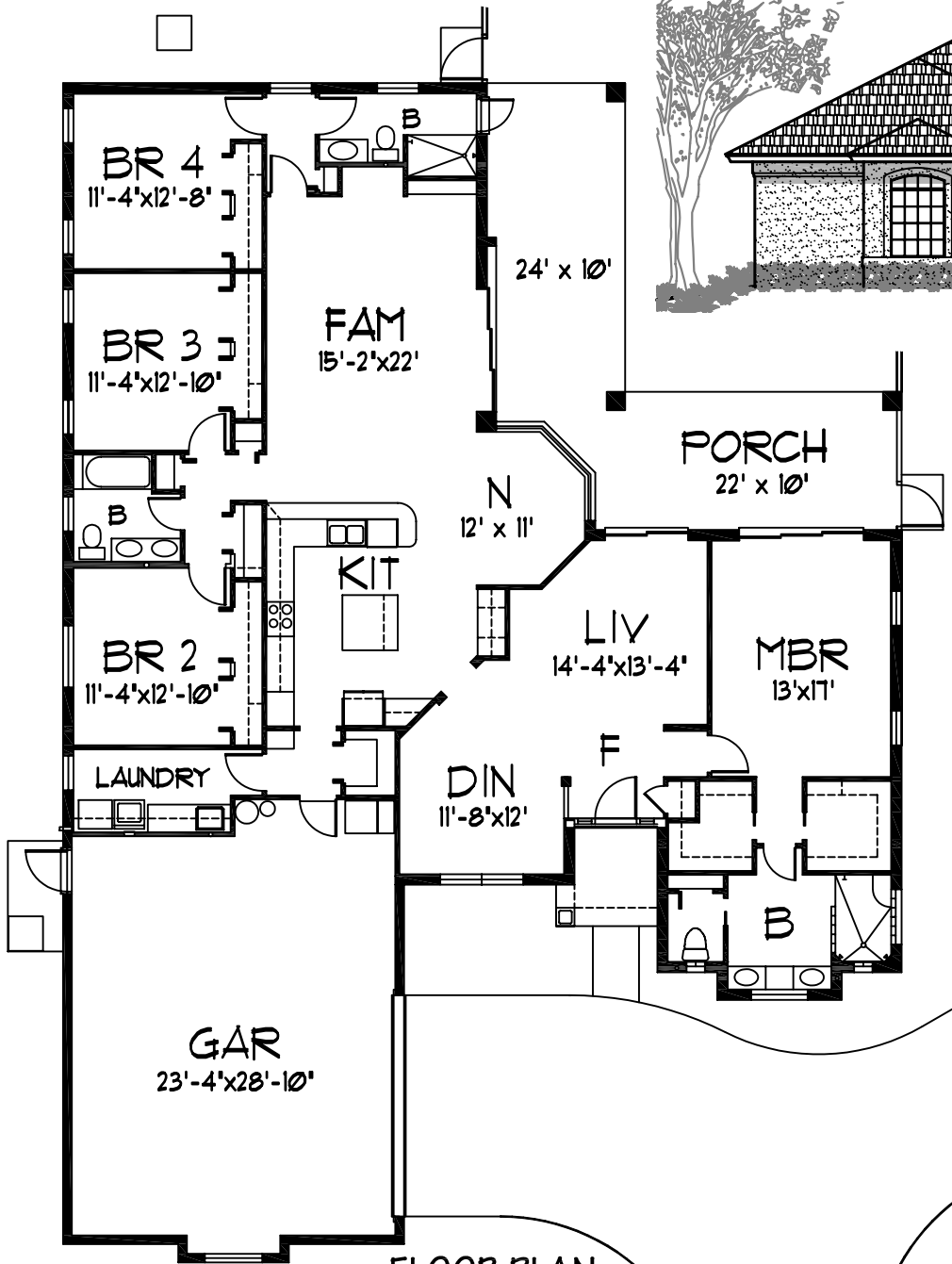


FRONT ELEVATION

**FEATURES**

- 4 BEDROOMS WITH 3 BATHROOMS
- 2 1/2 CAR GARAGE
- CATHEDRAL CEILING IN LEISURE ROOM
- 12' CEILING IN LIVING/DINING
- LARGE KITCHEN WITH ISLAND & WALK IN PANTRY
- WALK THRU POOL BATH



**FLOOR PLAN**  
TOTAL LIVING: 2586 S.F.

**A BETTER PLAN, INC.**  
2090 W. EAU GALIE BLVD., SUITE. B  
MELBOURNE, FL. 32955

**2586-1**  
**ASBURY**