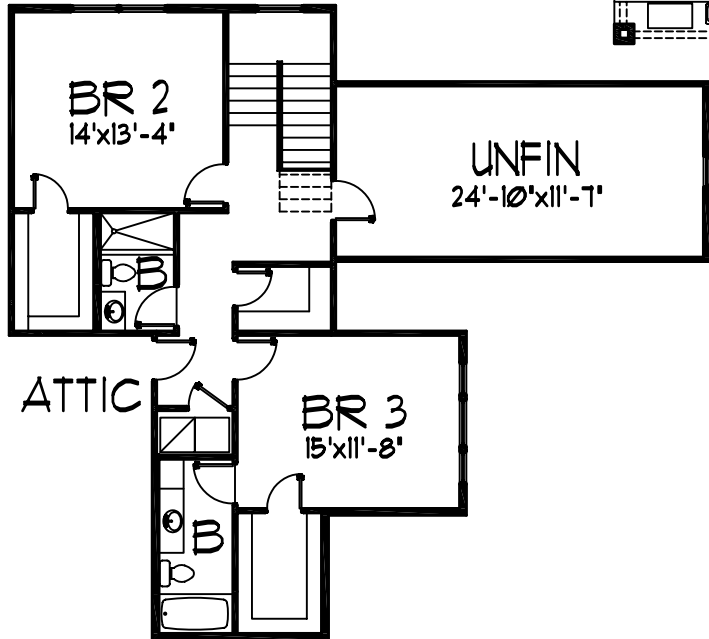


FEATURES

- 3 BEDROOMS & 3 BATHROOMS
- UNFINISHED BOUNUS ROOM
- DEN, LIVING, DINING, & FAMILY ROOM
- LARGE REAR PORCH
- SUMMER PORCH WITH SUMMER KITCHEN
- 2 CAR GARAGE
- IN LAW SUITE WITH LIVING, KITCHEN, BEDROOM & GARGE

FIRST FLOOR PLAN
TOTAL LIVING: 3710 S.F.



SECOND FLOOR PLAN



FRONT ELEVATION

A BETTER PLAN, INC.
2090 W. EAU GALIE BLVD., SUITE. B
MELBOURNE, FL. 32935

3710-1
ASPEN